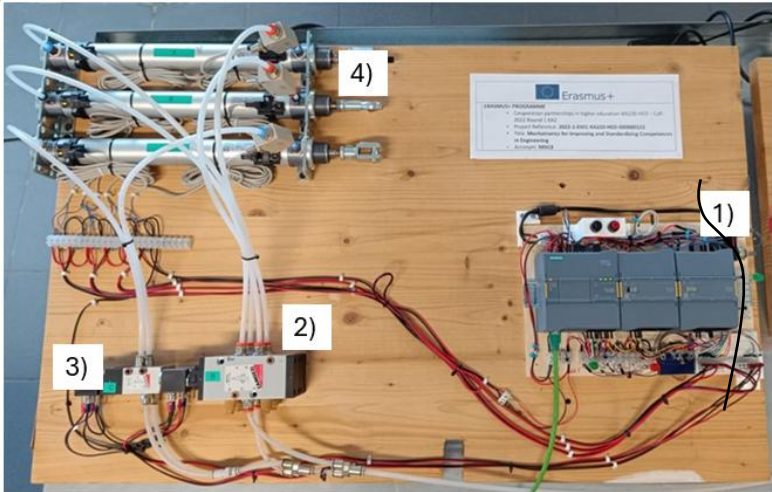
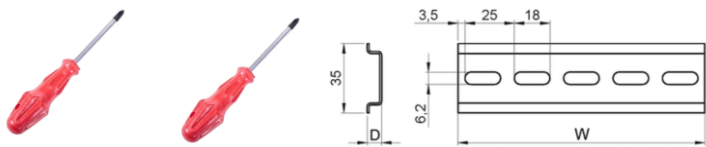


List of Parts



- 1. n.1 Siemens PLC of type 1215C;
- 2. n.2 5/2 single-solenoid electrically operated directional control valves (for cylinders A and B);
- 3. n.2 3/2 single-solenoid electrically operated monostable valves (for cylinder C, manifold-mounted);
- 4. n.3 Double-acting pneumatic cylinders (A, B, C).

List of Tools



- 1. n.2 Screw driver, Philips and FlatHead;
- 2. n.32 Screw
- 3. n.3 Din 35mm guide (W=25 cm)

Procedure

- 1. Step 1: Screw the 3D printed parts (Fig 1) in their desidered position onto the board;
- 2. Step 2: Screw all the parts in their desidered position onto the board;
- 3. Step 3: Install the flow regulator to the cylinder and connect the pneumatic valves following the Fig. 2;
- 4. Step 5: Connect the part 1 following the Fig.3.

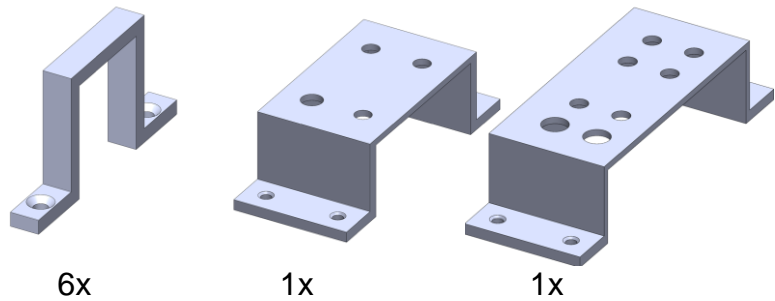


Fig 1

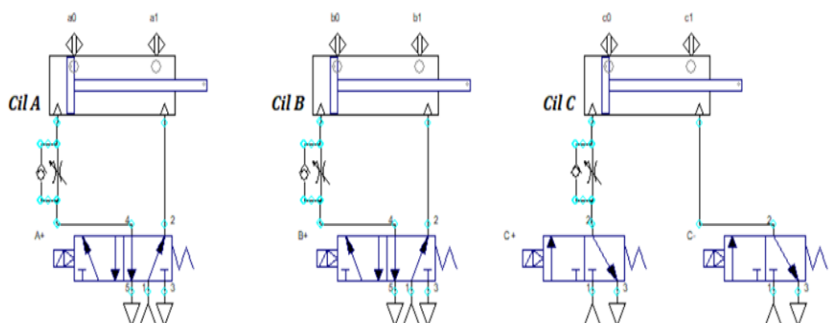
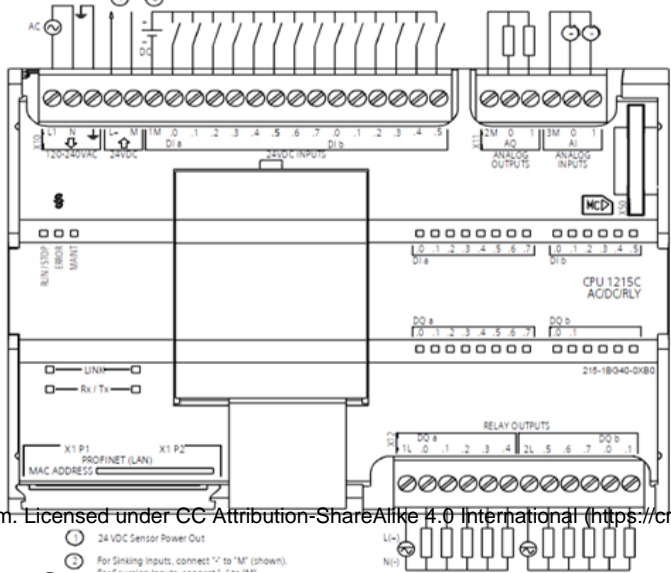


Fig 2



Sensor	Input	Com	Output
a <sub>0</sub>	DIa.0	A+	DQa.0
a <sub>1</sub>	DIa.1	A-	DQa.1
b <sub>0</sub>	DIa.2	B+	DQa.2
b <sub>1</sub>	DIa.3	B-	DQa.3
c <sub>0</sub>	DIa.4	C+	DQa.4
c <sub>1</sub>	DIa.5	C-	DQa.5
PB <sub>1</sub>	DIa.6		
PB <sub>2</sub>	DIa.7		

Fig 3

